

PG42775



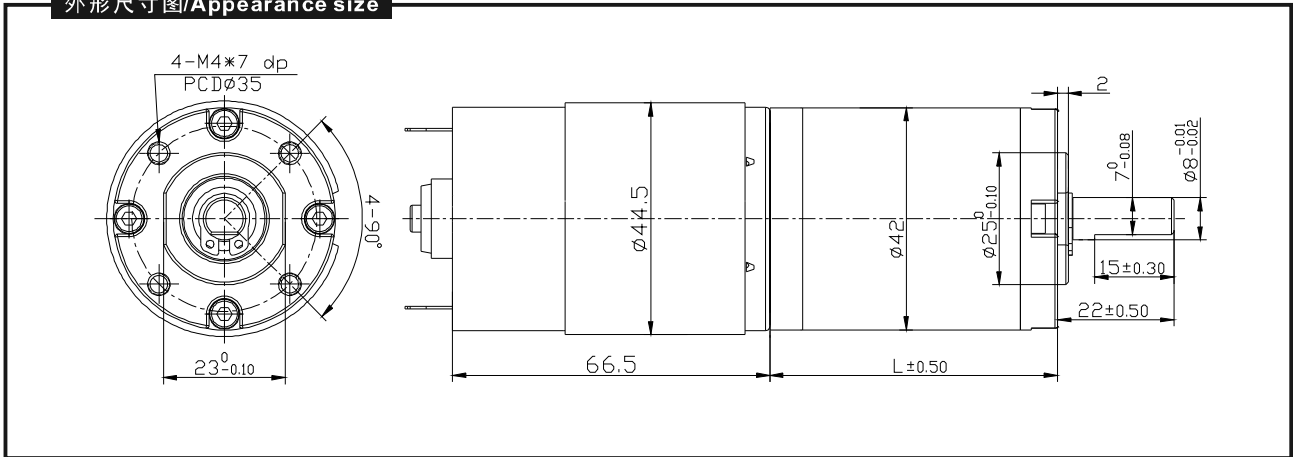
适用范围/Typical applications:

监控云台/云台、烘烤架、烤炉、清洗机、垃圾处理机、捆钞机、医疗食品、稳压器、游戏机、灌流泵、办公设备、家用电器。

Pan/Tilt cameras, Grill, Oven, Cleaning machine, Garbage disposers, Packing bank note machine, Coffee machine, Medical machine, Manostat, Amusement equipment, infusion pumps, Office equipment, Household appliances, Automatic actuator.

TWIRL MOTOR

外形尺寸图/Appearance size



齿轮箱清单/Gearbox data:

级数 Number of stages	1 stages reduction	2 stages reduction	3 stages reduction	4stages reduction	5stages reduction
减速比Reduction ratio	3.7,	10.2, 13.7, 19.2,	32.5, 50.9, 71.2, 99.5	139, 188, 264, 369, 516,	699, 977, 1367, 1911, 2672, 3736,
齿轮箱长度 Gearbox length "L" mm	31.8	43.1	54.4	65.7	77
最大额定力矩 Max. Running torque	20Kgf · cm	60Kgf · cm	120Kgf · cm	120Kgf · cm	120Kgf · cm
最大损坏扭力 Max. Gear breaking torque	60Kgf · cm	180Kgf · cm	360Kgf · cm	360Kgf · cm	360Kgf · cm
效率Gearing efficiency	90%	81%	73%	65%	59%

马达清单/Motor data:

马达型号 Motor name	额定电压 Rated Volt. V	空载No load		负载扭矩Load torque				堵转扭矩Stall torque	
		Current	Speed	Current	Speed	Torque	Output power	Torque	Current
		mA	r/min	mA	r/min	gf · cm	W	gf · cm	A
RS-775123000	12	≤420	3000	≤1300	2430	408	10.4	2484	6.7
RS-775124500	12	≤750	4500	≤2100	3710	476	17.6	2714	10.4
RS-775126000	12	≤1300	6000	≤3500	5195	478	25.5	3129	18.6
RS-775243000	24	≤210	3000	≤600	2590	364	9.87	2050	3.2
RS-775244500	24	≤480	4500	≤1300	3850	482	18.5	3335	5.3
RS-775246000	24	≤630	6000	≤2100	5233	574	30.8	4565	12.1

1、减速后的输出力矩 = 马达力矩 X 减速比 X 齿轮效率。输出转速 = 马达转速 / 减速比。

1、After connecting motor and gearbox which is named gearmotor the output torque: motor torque X reduction ratio X gearing efficiency; output speed: motor speed / reduction ratio.

NOTE:

1、马达命名: 如PG45775123000-99.5K。马达参数如马达清单上的RS-775123000, 齿轮减速比参数如齿轮箱清单上的99.5, 马达的输出转速

和输出力矩请参照上表的马达清单。

2、马达可安装的译码器参数请参照第48页。

3、标准输出轴为ø8.0mm, 其它尺寸可根据客户要求制作。

4、以上参数仅作参考, 具体以实物为准。

1、Gearmotor named methods: e.g. PG45775123000-99.5K Motor please refer to the motor data RS-775123000. Gearbox please refer to gearbox data reduction ratio 99.5. Related to gearmotor output speed and torque please refer to motor data.

2、Motor can be installed with magnetic encoder, encoder parameters please refer to Page 48.

3、Standard output shaft after reducing: ø8.0mm. other sizes of the output shaft can make as client request.

4、Chart only for reference, products shall prevail the entity.